



## **Acoustic Treatment Kit Installation Guide**

Follow the instructions below to setup your new treatment kit. If you've got any more specific questions about how to treat your space please email: [sales@universal-acoustics.co.uk](mailto:sales@universal-acoustics.co.uk) or visit our website for more info: [www.universal-acoustics.co.uk](http://www.universal-acoustics.co.uk)

### **Step One: Corner Bass Trapping**

Low frequencies build up in the corners of your room, so that is where you'll want to place your Bass Traps for the best effect. At the very least you'll want one Bass Trap in each corner behind your speakers, starting from the ceiling and working your way down with any additional traps.

The other important places for bass trap placement is the area above your desk, horizontally where the wall meets the ceiling, and the opposite wall/ceiling directly behind you, again horizontally.

If you have doors or windows near your vertical corners that prohibit you from placing Bass Traps as described, simply place them horizontally along the junctures between the walls and the ceiling.

### **Step Two: Early Reflection Treatment**

Reflections that arrive at your ears within 80 milliseconds of the direct sound cannot be distinguished by your brain as a separate source. This can cause issues with recording accuracy or critical listening applications.

Try this simple exercise to help you find the best places for your absorption tiles: While sitting at your listening position, have someone move a mirror along the front wall, side walls and ceiling. Anywhere you see your speaker's reflection is a good location for your tiles.

The halfway point between the speakers and your listening position on the side walls and ceiling will need tiles along with the front wall located behind the speakers.

### **Step Three: Ambience Control**

The rear portion of the room should be treated as well to control ambience and late reflections. Place tiles on the rear wall to absorb the direct sound from the speakers.

The rear portion of the side walls should have staggered treatment-i.e. the pattern that is used on the left wall should be inversed for the right wall. Additional tiles should be placed on the ceiling in the rear portion.

## Step Four: Welcome to the World of Professional Acoustic Treatment

### Installation Tips

Space Mist is a high strength aerosol adhesive with the advantage of a variable spray width button, formulated to provide the perfect solution for mounting acoustic foam to virtually any type of substrate or material in a pro or home environment.

Important - Pay careful attention to the HAZARD WARNINGS on the Space Mist label and only use in a well ventilated room. Wearing a mask is also recommended during the installation process.

A good technique is to spray Space Mist about 15 - 25cm away from the backside of each tile starting from the centre out to avoid over spraying onto the side edges. Keep the can vertical while spraying close to all four edges on the back of the tile then finish up with a X in the centre. Wait for 15 - 30 seconds after spraying before placing the tile on the wall, this will allow the mist to become tacky - giving you a stronger grip on the surface you want to stick it to, then press the tile into place until firmly bonded. We recommend that you spray the tile rather than the wall and that you only spray one surface rather than both to avoid slippage when you press the tile into place.

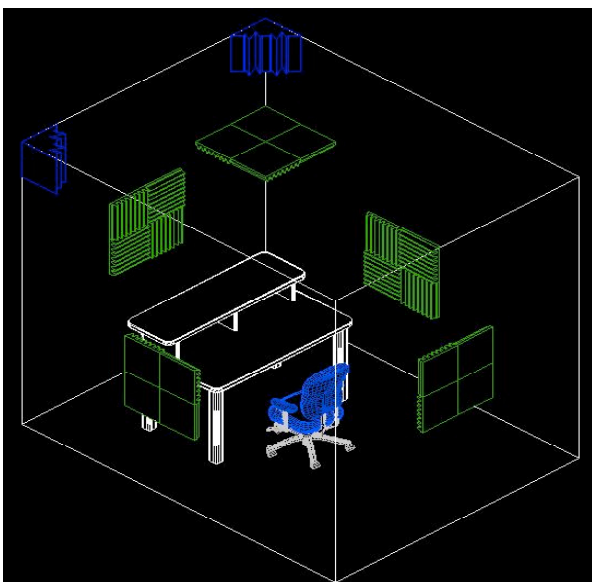
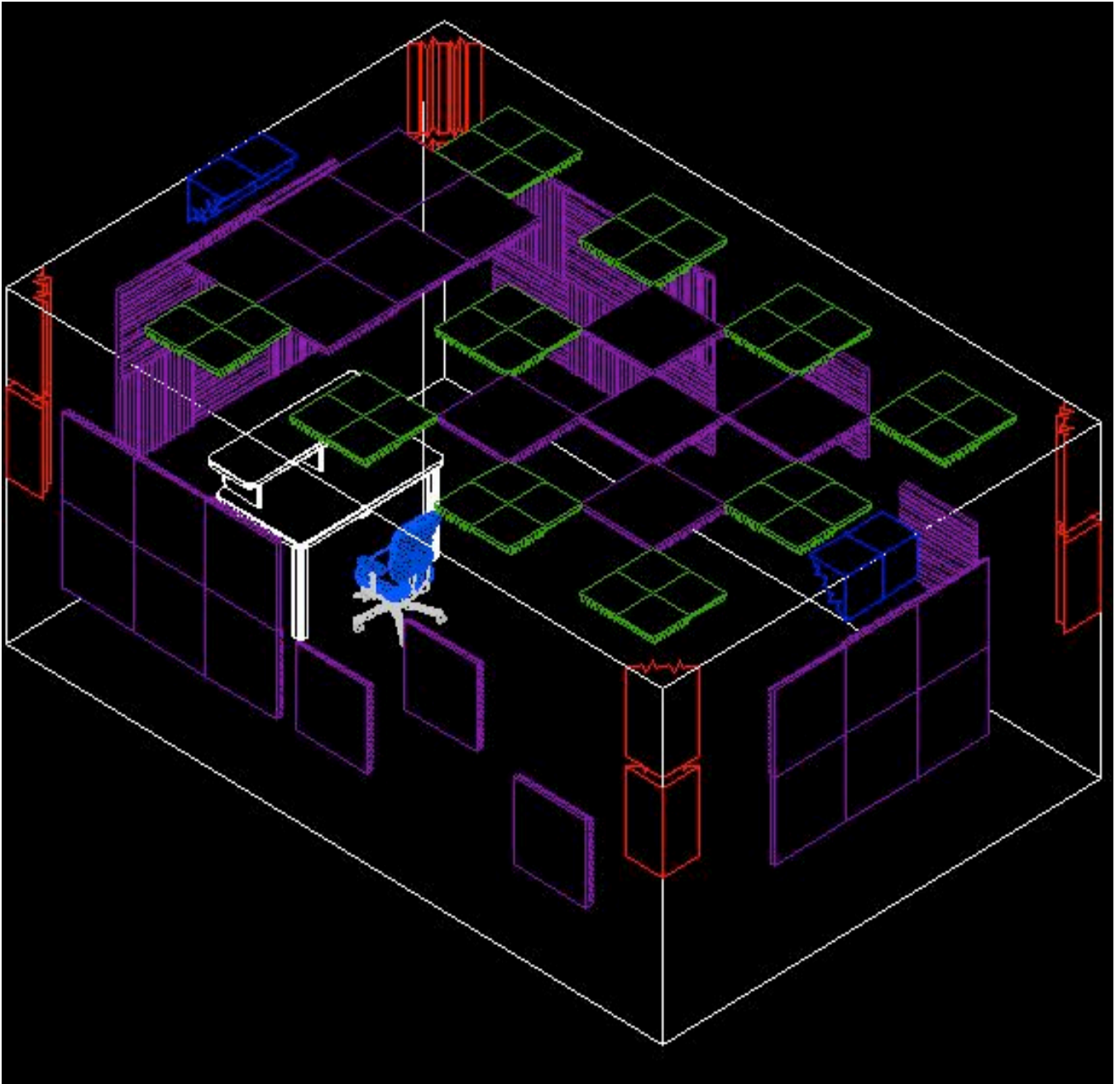
If you'd rather not glue these tiles directly to your walls you can mount them on a lightweight substrate (thin MDF, plywood, plastic or cardboard) and then hang the mounted tiles like frames on nails or even use velcro stickers / command strips to minimise potential damage to your paintwork / wallpaper. This allows a variety of benefits:

A: If you ever need to relocate your studio, the panels are easy to remove with very little clean up / damage to walls or tiles themselves due to the fact that they're not glued down.

B: You can space the panels away from the wall with wood blocks or something similar in order to obtain better low frequency absorption from each panel. Typically, an air gap of 50mm or more is recommended.

C: If you desire a more "dead" or "lively" room, you can easily add or remove panels mounted this way, allowing you to have much more control over your acoustic environment.

For more info please visit [www.universal-acoustics.co.uk](http://www.universal-acoustics.co.uk)



The patterns shown are examples of how you can place the tiles in your space. You don't have to follow them exactly and can instead choose a more aesthetic layout, with rotated tiles, as long as you follow the guidelines above and it won't detract from the performance of the acoustic treatment.

Universal Acoustics foam materials will not only dramatically improve your acoustics but can also make your workspace look great.

## FAQ:

Q: Will this kit stop sound from leaving or entering my room?

A: No. Acoustic treatment is not designed to stop sound. A very involved construction process known as creating a "Floating Room" is required to completely stop sound from travelling from one space to another. Look into "Soundproofing" if you'd like to keep noise from travelling.

Q: What should I expect to hear after the kit is installed?

A: You should expect a more accurate sound, more consistent low frequency response & less reflected energy. Your recordings should sound more controlled and your mixes should translate better to other audio devices and systems.

Q: Is there anything else I can do to improve my setup?

A: Yes. It entirely depends on what you want out of your space now that you've got your sound more under control, below are some options for deadening or amplifying the liveliness of your room.

You could place additional Bass Traps on all the vertical and horizontal corners of the room. You cannot have too many Bass Traps in a small room, so adding Bass Traps will only improve your low frequency response. You could also install some more tiles on the walls if the space still sounds too lively.



Introduce a set of Universal Acoustics Vibro-Pads to your monitor system. These specially formulated anti-compression pads are designed to improve the accuracy and imagery of your studio monitors by isolating and de-coupling them from the surface they're resting on. Each pack contains 2 sets of pads with adjustable angle wedge options and will fit under virtually every size of nearfield monitor.

Consider adding some diffusers or one of our Cluster Kits to your space, these will help create a more open atmosphere within a dull room. Our diffusers can be mounted in clusters, independently or combined with any other Universal Acoustics absorption tiles. Diffusers main purpose is to help sound bounce around the room while absorption tiles are there to sap the sounds energy and stop it moving as much.

Universal Acoustics Solar System Room Kits are made from high density flame retardant polyester foam and are perfect for use in any room that requires audio accuracy.

Thank you for purchasing your Solar System Room Kit from Universal Acoustics, designed to provide many years of acoustic control within your audio environment.

For more info please visit [www.universal-acoustics.co.uk](http://www.universal-acoustics.co.uk)